

Han Modular Twin angled housing M32

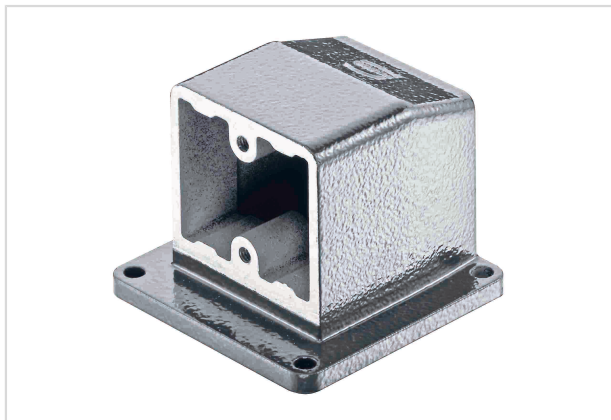


Image is for illustration purposes only. Please refer to product description.

| | |
|--------------------|---|
| Part number | 19 14 002 0952 |
| Specification | Han Modular Twin angled housing M32 |
| HARTING eCatalogue | https://b2b.harting.com/19140020952 |

Identification

| | |
|--------------------------|-------------------|
| Category | Hoods/Housings |
| Series of hoods/housings | Han-Modular® Twin |
| Type of hood/housing | Angled housing |

Version

| | |
|--------------|--|
| Size | Modular Twin |
| Cable entry | 1x M32 |
| Locking type | Single locking lever |
| Details | Rated voltage ≤ 630 V Rated impulse voltage ≤ 6 kV Pollution degree 3 For a complete connector the specified voltage rating is the maximum level which can be achieved. In cases where the used module(s) do offer lower voltage ratings, then these lower ratings are valid. Higher voltage ratings in individual applications can be approved in coordination with HARTING. |

Technical characteristics

| | |
|--|-----------------|
| Limiting temperature | -40 ... +125 °C |
| Degree of protection acc. to IEC 60529 | IP65 |

Material properties

| | |
|-------------------------|----------------------|
| Material (hood/housing) | Zinc die-cast |
| Surface (hood/housing) | Powder-coated |
| Colour (hood/housing) | RAL 7037 (dust grey) |
| RoHS | compliant |



Pushing Performance

Material properties

| | |
|--------------------------------------|----------------|
| ELV status | compliant |
| China RoHS | e |
| REACH Annex XVII substances | No |
| REACH ANNEX XIV substances | No |
| REACH SVHC substances | No |
| California Proposition 65 substances | Yes |
| California Proposition 65 substances | Nickel Lead |

Specifications and approvals

| | |
|----------------|-----------|
| Specifications | IEC 61984 |
| CE | Yes |

Commercial data

| | |
|--------------------------------|--|
| Packaging size | 1 |
| Net weight | 211.75 g |
| Country of origin | China |
| European customs tariff number | 85389099 |
| eCl@ss | 27440202 Shell for industrial connectors |