

PLEASE CHECK WWW.MOLEX.COM FOR LATEST PART INFORMATION

Part Number: [2078430004](#)
Status: **Active**
Overview: [L1NK Connector System](#)
Description: L1NK 250 Header, Vertical, Fully Shrouded, Tin (Sn) Plating, 4 Circuits, with Peg

Documents:

| | |
|--|---|
| 3D Model | Product Specification 2079020001-PS-SK-000 (PDF) |
| Drawing (PDF) | Application Specification 2079020001-AS-000 (PDF) |
| 3D Model (PDF) | Packaging Specification 2078430000-PK-000 (PDF) |
| Product Specification 2079020001-PS-000 (PDF) | Test Summary 2079020000-TS-000 (PDF) |
| Product Specification 2079020001-PS-CH-000 (PDF) | Datasheet (PDF) |
| Product Specification 2079020001-PS-ES-000 (PDF) | RoHS Certificate of Compliance (PDF) |
| Product Specification 2079020001-PS-JP-000 (PDF) | |

Agency Certification

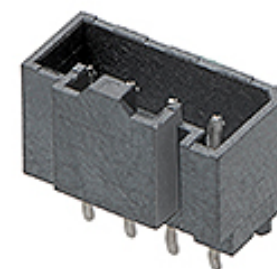
CSA 152514

General

| | |
|----------------|---------------------------------------|
| Product Family | PCB Headers |
| Series | 207843 |
| Application | Power, Wire-to-Board |
| Overview | L1NK Connector System |
| Product Name | L1NK 250 |
| UPC | 191130123148 |

Physical

| | |
|--------------------------------|------------------------|
| Breakaway | No |
| Circuits (Loaded) | 4 |
| Circuits (maximum) | 4 |
| Color - Resin | Black |
| Durability (mating cycles max) | 25 |
| First Mate / Last Break | No |
| Flammability | 94V-0 |
| Glow-Wire Capable | Yes |
| Guide to Mating Part | No |
| Keying to Mating Part | None |
| Lock to Mating Part | Yes |
| Material - Metal | Brass |
| Material - Plating Mating | Tin |
| Material - Plating Termination | Tin |
| Material - Resin | Liquid Crystal Polymer |
| Net Weight | 0.429/g |
| Number of Rows | 1 |
| Orientation | Vertical |
| PC Tail Length | 3.45mm |
| PCB Locator | No |
| PCB Retention | None |
| PCB Thickness - Recommended | 1.60mm |
| Packaging Type | Bag |
| Pitch - Mating Interface | 2.50mm |
| Pitch - Termination Interface | 2.50mm |
| Polarized to Mating Part | Yes |
| Polarized to PCB | Yes |
| Shrouded | Fully |
| Stackable | No |
| Surface Mount Compatible (SMC) | No |
| Temperature Range - Operating | -40° to +105°C |



Series image - Reference only

EU ELV

Not Relevant

EU RoHS

Compliant

REACH SVHC

Not Contained Per -
D(2021)4569-DC (8
July 2021)

Halogen-Free

Status

Low-Halogen

For more information, please visit [Contact US](#)

China ROHS

ELV

RoHS Phthalates

China RoHS

Green Image

Not Relevant

Not Contained

Search Parts in this Series

[207843 Series](#)

Mates With

L1NK 250 Receptacle Housing [207841](#)

Termination Interface: Style

Through Hole

Electrical

Current - Maximum per Contact

6.5A

Voltage - Maximum

250V AC (RMS)/DC

Material Info

Reference - Drawing Numbers

Application Specification

2079020001-AS-000

Packaging Specification

2078430000-PK-000

Product Specification

2079020001-PS-000, 2079020001-PS-CH-000,
2079020001-PS-ES-000, 2079020001-PS-JP-000,
2079020001-PS-SK-000

Sales Drawing

2078430004-SD-000

Test Summary

2079020000-TS-000

This document was generated on 02/03/2022

PLEASE CHECK WWW.MOLEX.COM FOR LATEST PART INFORMATION