

**cinch**  
CONNECTIVITY SOLUTIONS  
a bel group

**JOHNSON™**

Johnson  
**5G**  
READY!

Johnson **connectors, adapters and cable assemblies** are **5G** ready for all your design, testing and application needs.

### **5G** Ready Series

SMA

SMP

SMPM

1.85mm

2.4mm

2.92mm

Ready to talk about what **5G** Solutions Cinch has for you? Contact us at +1 507.833.8822

[belfuse.com/cinch](http://belfuse.com/cinch)

### SMA

- 0-26.5 Ghz
- Standard brass, non-magnetic brass and stainless steel material options
- Patented High Frequency and Self Fixture end launch connectors
- Quick connect cable plugs and adapter



### SMP

- Allows for axial and radial misalignment (blind mate applications)
- Micro-miniature, Slide-On/Snap-On interface
- Performance up to 40 GHz
- Excellent reliability where extreme shock & vibration conditions are experienced



### SMPM

- Allows for axial and radial misalignment (blind mate applications)
- 35% smaller size than the SMP connectors
- Performance up to 65 GHz
- Excellent reliability where extreme shock & vibration conditions are experienced



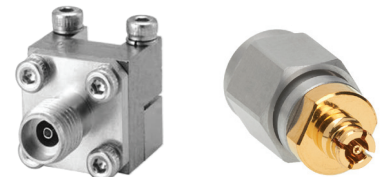
### 1.85mm

- Stainless steel construction
- Superior electrical performance to 67 GHz
- Connectors in End Launch Jack/ Plug option
- Adapters to 1.85mm, 2.4mm, SMPM



### 2.4mm

- Stainless steel construction
- Superior electrical performance to 50 GHz
- Connectors in End Launch and Flange options
- Adapters to 2.4mm, SMP, 2.92mm, SMA



### 2.92mm (SMK)

- Great for applications that require high frequency transmission
- Connector mating interface per MIL-STD-348
- Superior electrical performance up to 40 GHz
- Female contacts have unique three-slot construction

