

Surge suppressor, RC element, 127...240 V AC, 150 ... 250 V DC, for motor contactors Size S0,

General technical data		
product brand name		SIRIUS
product designation		surge suppressor
size of contactor		S0
design of the surge suppressor		with RC elements
ambient temperature		
• during storage	°C	-40 ... +80
• during operation	°C	-25 ... +60
Control circuit/ Control		
type of voltage of the control supply voltage		AC/DC
control supply voltage frequency		
• 1 rated value	Hz	50
• 2 rated value	Hz	60
control supply voltage 1		
• at DC	V	150 ... 250
• at AC		
— at 50 Hz	V	127 ... 240
— at 60 Hz	V	240 ... 127
Installation/ mounting/ dimensions		
mounting position		any
fastening method		clip-on
width	mm	30
height	mm	19
depth	mm	12
Certificates/ approvals		
certificate of suitability		CE / UL / CSA / CCC
General Product Approval	EMC	Declaration of Conformity



[Miscellaneous](#)



Test Certificates

Shipping Approval

[Type Test
Certificates/Test
Report](#)

[Special Test
Certificate](#)



other

Railway

[Confirmation](#)



[Vibration and Shock](#)

Further information

Information- and Downloadcenter (Catalogs, Brochures,...)

<https://www.siemens.com/ic10>

Industry Mall (Online ordering system)

<https://mall.industry.siemens.com/mall/en/en/Catalog/product?mlfb=3RT2926-1CD00>

Cax online generator

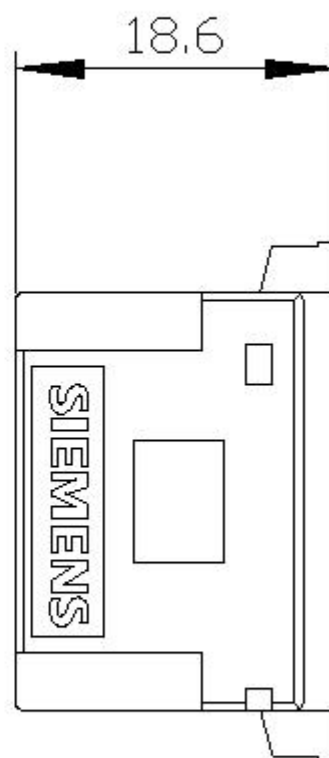
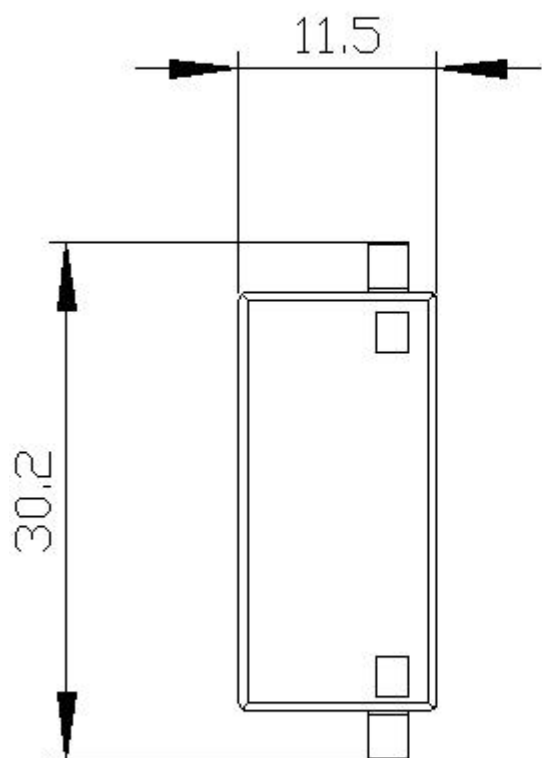
<http://support.automation.siemens.com/WW/CAXorder/default.aspx?lang=en&mlfb=3RT2926-1CD00>

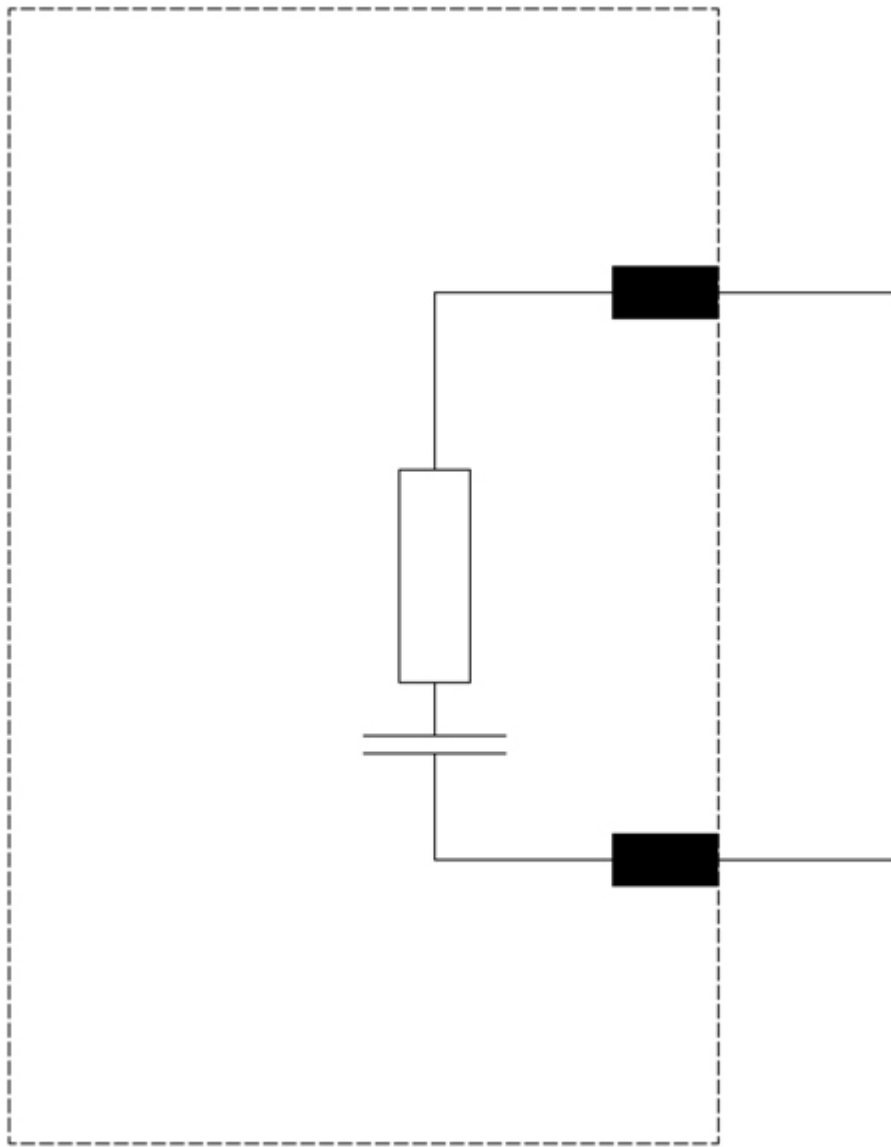
Service&Support (Manuals, Certificates, Characteristics, FAQs,...)

<https://support.industry.siemens.com/cs/ww/en/ps/3RT2926-1CD00>

Image database (product images, 2D dimension drawings, 3D models, device circuit diagrams, EPLAN macros, ...)

http://www.automation.siemens.com/bilddb/cax_de.aspx?mlfb=3RT2926-1CD00&lang=en





last modified:

5/15/2020 