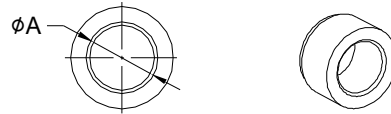
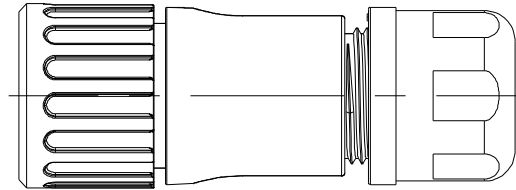
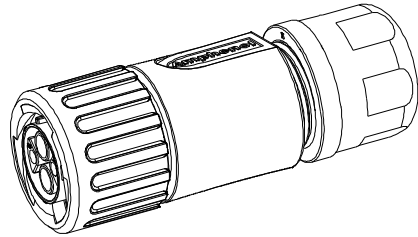
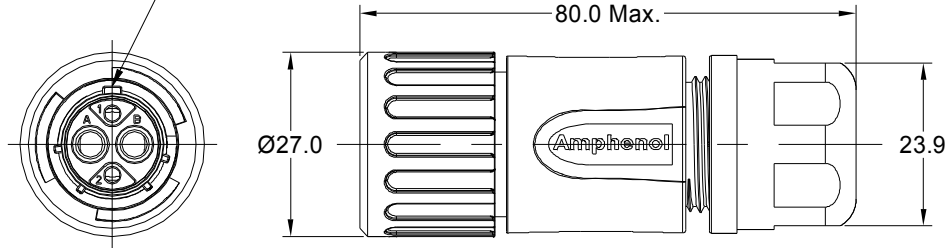


MASTER KEYWAY



| DIMENSION $\phi A$ | CABLE OD RANGE |
|--------------------|----------------|
| 9.5 MM             | 6.0~9.0MM      |
| 12.2 MM            | 8.5~12.0MM     |

| KEY | PART NUMBER    |                |
|-----|----------------|----------------|
|     | -40°C ~ +105°C | -40°C ~ +125°C |
| N   | RTS6BS12N2S    | RTS6BS12N2S03  |

| REVISIONS |     |                                |             |       |       |
|-----------|-----|--------------------------------|-------------|-------|-------|
| REV       | ECO | DESCRIPTION                    | DATE        | BY    | APPR  |
| A1        | -   | FIRST RELEASED                 | Aug-10-2016 | Ben   | Tommy |
| A2        | -   | UPDATE TECHNICAL PARAMETERS    | Jun-21-2017 | Nick  | Tommy |
| A3        | -   | UPDATE DRAWING                 | Mar-19-2018 | White | Tommy |
| A4        | -   | UPDATE DRAWING                 | Apr-10-2018 | White | Tommy |
| A5        | -   | UPDATE DESCRIPTION AND VOLTAGE | SEP-23-2021 | BLINK | TOMMY |

NOTES : (UNLESS OTHERWISE SPECIFIED)

- MATERIAL :
  - SHELL : THERMOPLASTIC , UL94 V-0.
  - INSERT : THERMOPLASTIC , UL94 V-0.
  - COUPLING NUT : THERMOPLASTIC , UL94 V-0.
  - O-RING : NBR OR SILICONE RUBBER.
  - WASHER : SILICONE RUBBER.
  - BACK SHELL : THERMOPLASTIC , UL94 V-0.
  - CLAMP NUT : THERMOPLASTIC , UL94 V-0.
  - CLAMP RING : THERMOPLASTIC , UL94 V-0.
  - CABLE SEAL : EPDM.
- SPECIFICATIONS :
  - RATED CURRENT : 2.5mm CONTACT: 23A (MAX).  
20# CONTACT: 5A (MAX).
  - RATED VOLTAGE : 500V(AC/DC).
  - OPERATING TEMPERATURE : SEE TABLE.
  - DIELECTRIC WITHSTANDING VOLTAGE : LESS THAN 2 MILLIAMPS CURRENT LEAKAGE@2000 VOLTS AC.
  - INSULATION RESISTANCE : 5000 MEGOHMS MIN.
  - IP-CLASS : IP67 AND IP69K IN THE MATED CONDITION.
  - MATING CYCLES DURABILITY : 500 CYCLES MIN.
  - RoHS COMPLIANT.
- SUITABLE CONTACTS : 2.5mm CONTACT.  
20# CONTACT.
- ALL DIMENSIONS ARE FOR REFERENCE USE ONLY.

| QUANTITY   | PART NUMBER | DESCRIPTION  | ITEM   |
|--|-------------|--|--|
| <b>MATERIALS LIST</b>  |             |  |  |
| <b>UNLESS OTHERWISE SPECIFIED</b><br>1) All dimensions are in metric(mm).<br>2) Tolerances are as follows:<br>1 PL DEC ±0.30 Fractions ±1/64<br>2 PL DEC ±0.15 Angles ±1°<br>3 PL DEC ±0.08<br>3) Note reference = |             | <b>SIGNATURES</b> <b>DATE</b><br>DRAWN: BLINK    SEP-23-2021<br>CHECKED: ORION    SEP-24-2021<br>ENGINEER:<br>APPROVAL: TOMMY    SEP-27-2021<br>CUSTOMER:  | <br>Sine Systems - www.amphenol-sine.com<br>44724 Morley Drive<br>Clinton Township, MI 48036   |
| MATERIAL SPECIFICATIONS:<br><br>PROCESS SPECIFICATIONS:<br><br>NEXT ASSY:  |             | THIS DRAWING IS SUPPLIED FOR INFORMATION ONLY. DESIGN FEATURES, SPECIFICATIONS AND PERFORMANCE DATA SHOWN HEREON ARE THE PROPERTY OF THE AMPHENOL CORPORATION. NO RIGHTS OF REPRODUCTION ARE IMPLIED. ALL DIMENSIONS ARE SUBJECT TO NORMAL MANUFACTURING VARIATIONS. | EcoMate Aquarius, PLUG, STRAIGHTER, 4 POS(2+2), SOCKET CONTACT, SIZE 12<br><b>SIZE</b> TYPE DWG NO: <b>RTS6BS12*2Sxx</b> <b>REVISION</b> <b>A5</b><br><b>B C-</b><br>SCALE NONE SHEET 1 OF 1 |

TITLE: EcoMate Aquarius, PLUG, STRAIGHTER, 4 POS(2+2), SOCKET CONTACT, SIZE 12 DWG NO: RTS6BS12\*2Sxx REV: A5 SH: 1 OF: 1