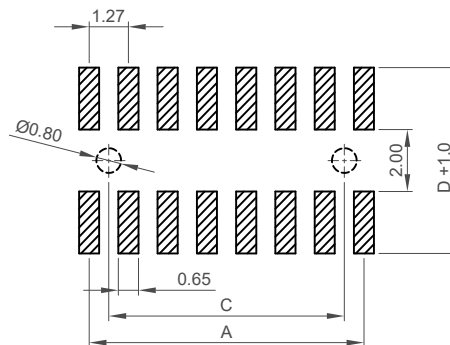
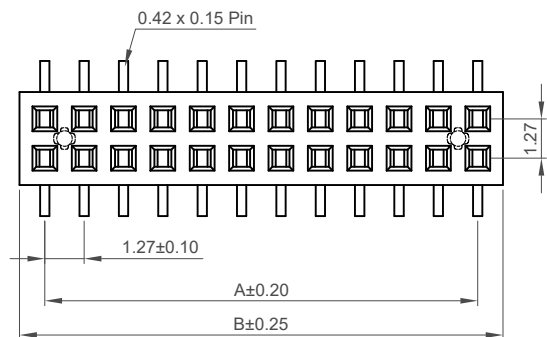
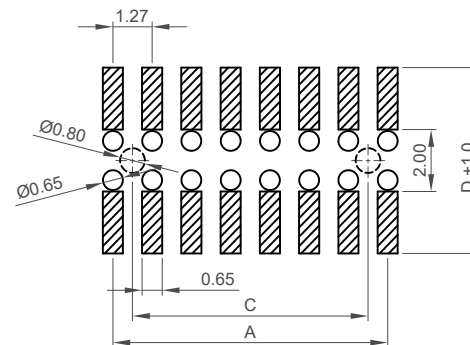


H
G
F
E
D
C
B
A



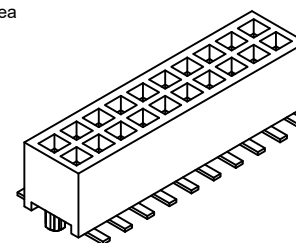
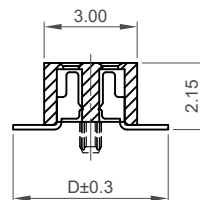
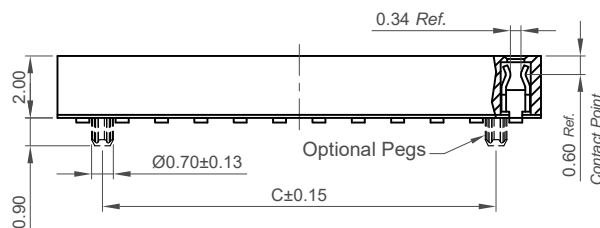
For Top Entry



For Bottom Entry

Recommended PCB Layouts

▨ Solder Area



Specifications

Material

Insulator: LCP, UL 94V-0
Terminal: Phosphor Bronze

Plating

See Ordering Grid

Electrical

Current Rating: 1A per pin
Contact Resistance: 20 mΩ max.
Insulating Resistance: 1000 MΩ min.
Dielectric Withstand Voltage: 500V AC

Mechanical & Environmental

Operating Temperature: -40°C to +105°C
Soldering Process:
IR Reflow: 260°C for 10 sec.
Manual Solder: 350°C for 3-5 sec

Ordering Grid

BD050-XX-X-X-XXXX-L-X Request Samples and Quotation

No. of Contacts

04 to 80

Contact Plating

A = Gold Flash All Over (Standard)
C = Tin All Over

Locating Peg

0 = Without
1 = With

Packing Options

B = Tape & Reel with Cap (Standard)

C = Tape & Reel with Film

D = Tube

E = Tube with Cap

F = Tube with Film

Insulator Material

L = LCP

Dimension D (1/100mm) (Footprint Width)

0500 = 5.00mm (Standard)

0450 = 4.50mm

Mates with (Subject to pin length)

BD025 BD030 BD035
BD038 BD040 BD095

For bottom entry applications, stringent soldering control & pin alignment are required as lead to pad misalignment could cause incorrect mating.

Number of Contacts	Dimensions		
	A	B	C
4	1.27	2.78	/
6	2.54	4.05	1.27
8	3.81	5.32	2.54
10	5.08	6.59	3.81
12	6.35	7.86	5.08
14	7.62	9.13	6.35
16	8.89	10.40	7.62
18	10.16	11.67	8.89
20	11.43	12.94	10.16
22	12.70	14.21	11.43
24	13.97	15.48	12.70
26	15.24	16.75	13.97
28	16.51	18.02	15.24
30	17.78	19.29	16.51
32	19.05	20.56	17.78
34	20.32	21.83	19.05
36	21.59	23.10	20.32
38	22.86	24.37	21.59
40	24.13	25.64	22.86
42	25.40	26.91	24.13
44	26.67	28.18	25.40
46	27.94	29.45	26.67
48	29.21	30.72	27.94
50	30.48	31.99	29.21
52	31.75	33.26	30.48
54	33.02	34.53	31.75
56	34.29	35.80	33.02
58	35.56	37.07	34.29
60	36.83	38.34	35.56
62	38.10	39.61	36.83
64	39.37	40.88	38.10
66	40.64	42.15	39.37
68	41.91	43.42	40.64
70	43.18	44.69	41.91
72	44.45	45.96	43.18
74	45.72	47.23	44.45
76	46.99	48.50	45.72
78	48.26	49.77	46.99
80	49.53	51.04	48.26

Part Number		Product Description	
BD050		1.27mm Pitch Socket	
Drawing Date		Dual Row, Surface Mount, Low Profile, Dual Entry	
28th December 2007			
By	CC	Tolerances (Except as Noted)	
Detail	BD050 K PCN	Length X. ± 0.30 X.X ± 0.25 X.XX ± 0.15 X.XXX ± 0.10	Angle X° ± 5° X.X° ± 3° X.XX° ± 2° X.XXX° ± 1°
Revision	K	Units: Metric (mm)	
Date	09/02/22	3rd Angle Projection	



This drawing is confidential and copyright of Global Connector Technology, Ltd (GCT). This drawing must not be copied or disclosed without written consent. E & OE

GCT
www.gct.co

Not to Scale
Drawn By PKN
Sheet No. 1/1