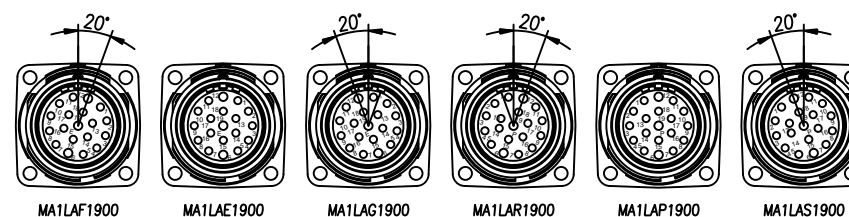
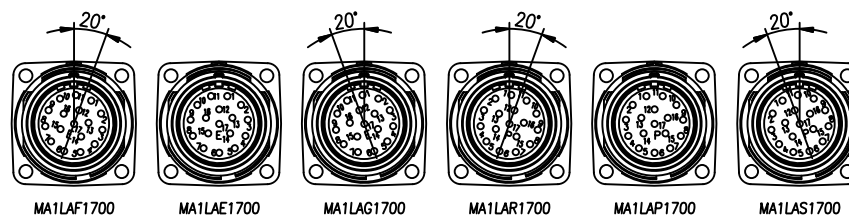
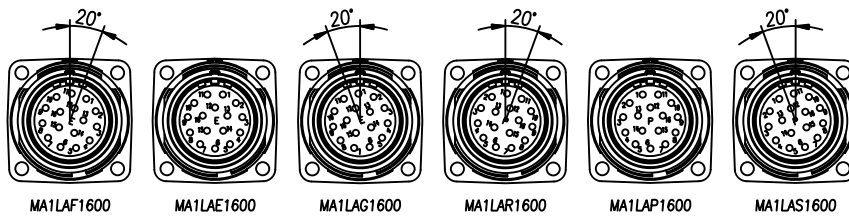
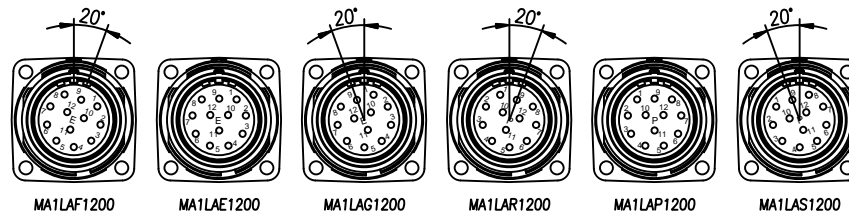
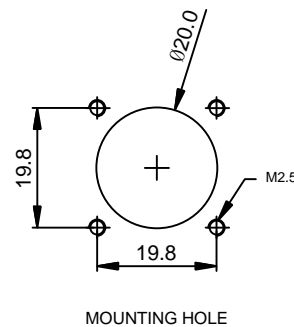
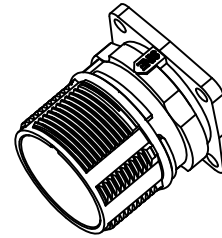
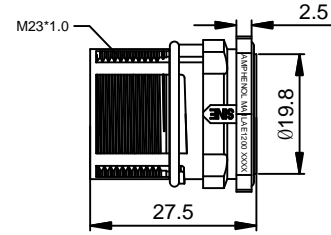
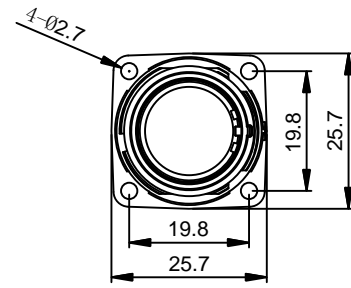


| REVISIONS | | | | | |
|-----------|-----|------------------------|-------------|-------|-------|
| REV | ECO | DESCRIPTION | DATE | BY | APPR |
| B1 | - | RELEASE NEW DWG FORMAT | Feb.06,2014 | Tod | Tommy |
| B2 | - | UPDATE THE DURABILITY | Jun.27,2015 | Drack | Tommy |
| B3 | - | UPDATED | 04DEC15 | MRF | Tommy |



| | | | |
|----------|-------------|---|------|
| - | MA1LAS1900 | M23, RECP, ST, 19POS, P TYPE, KEYED "S" | 27 |
| - | MA1LAR1900 | M23, RECP, ST, 19POS, P TYPE, KEYED "R" | 26 |
| - | MA1LAP1900 | M23, RECP, ST, 19POS, P TYPE | 25 |
| - | MA1LAG1900 | M23, RECP, ST, 19POS, E TYPE, KEYED "G" | 24 |
| - | MA1LAF1900 | M23, RECP, ST, 19POS, E TYPE, KEYED "F" | 23 |
| - | MA1LAE1900 | M23, RECP, ST, 19POS, E TYPE | 22 |
| - | MA1LAS1700 | M23, RECP, ST, 17POS, P TYPE, KEYED "S" | 21 |
| - | MA1LAR1700 | M23, RECP, ST, 17POS, P TYPE, KEYED "R" | 20 |
| - | MA1LAP1700 | M23, RECP, ST, 17POS, P TYPE | 19 |
| - | MA1LAG1700 | M23, RECP, ST, 17POS, E TYPE, KEYED "G" | 18 |
| - | MA1LAF1700 | M23, RECP, ST, 17POS, E TYPE, KEYED "F" | 17 |
| - | MA1LAE1700 | M23, RECP, ST, 17POS, E TYPE | 16 |
| - | MA1LAS1600 | M23, RECP, ST, 16POS, P TYPE, KEYED "S" | 15 |
| - | MA1LAR1600 | M23, RECP, ST, 16POS, P TYPE, KEYED "R" | 14 |
| - | MA1LAP1600 | M23, RECP, ST, 16POS, P TYPE | 13 |
| - | MA1LAG1600 | M23, RECP, ST, 16POS, E TYPE, KEYED "G" | 12 |
| - | MA1LAF1600 | M23, RECP, ST, 16POS, E TYPE, KEYED "F" | 11 |
| - | MA1LAE1600 | M23, RECP, ST, 16POS, E TYPE | 10 |
| - | MA1LAS1200 | M23, RECP, ST, 12POS, P TYPE, KEYED "S" | 9 |
| - | MA1LAR1200 | M23, RECP, ST, 12POS, P TYPE, KEYED "R" | 8 |
| - | MA1LAP1200 | M23, RECP, ST, 12POS, P TYPE | 7 |
| - | MA1LAG1200 | M23, RECP, ST, 12POS, E TYPE, KEYED "G" | 6 |
| - | MA1LAF1200 | M23, RECP, ST, 12POS, E TYPE, KEYED "F" | 5 |
| - | MA1LAE1200 | M23, RECP, ST, 12POS, E TYPE | 4 |
| QUANTITY | PART NUMBER | DESCRIPTION | ITEM |

| MATERIALS LIST | | | | | | | | | | | |
|---|--|--------------|---|------|------|---------|----------|---|----|------------|----|
| UNLESS OTHERWISE SPECIFIED | SIGNATURES | DATE | <h1>Amphenol</h1> <p>Sine Systems - www.amphenol-sine.com 44724 Morley Drive Clinton Township, MI 48036</p> | | | | | | | | |
| 1) All dimensions are in metric(mm). 2) Tolerances are as follows: 1 PL DEC ±0.30 2 PL DEC ±0.15 3 PL DEC ±0.08 | DRAWN: Drack | Jun.27,2015 | | | | | | | | | |
| 3) Note reference = | CHECKED: | | | | | | | | | | |
| | ENGINEER: | | | | | | | | | | |
| MATERIAL SPECIFICATIONS: | APPROVAL: | | M23, RECEPTACLE, STRAIGHT, THREADED | | | | | | | | |
| PROCESS SPECIFICATIONS: | CUSTOMER: | | | | | | | | | | |
| NEXT ASSY: | THIS DRAWING IS SUPPLIED FOR INFORMATION ONLY. DESIGN FEATURES, SPECIFICATIONS AND PERFORMANCE DATA SHOWN HEREON ARE THE PROPERTY OF THE AMPHENOL CORPORATION. NO RIGHTS OF REPRODUCTION ARE IMPLIED. ALL DIMENSIONS ARE SUBJECT TO NORMAL MANUFACTURING VARIATIONS. | | <table border="1"> <tr> <td>SIZE</td> <td>TYPE</td> <td>DWG NO.</td> <td>REVISION</td> </tr> <tr> <td>B</td> <td>C-</td> <td>MA1LAXxx00</td> <td>B3</td> </tr> </table> | SIZE | TYPE | DWG NO. | REVISION | B | C- | MA1LAXxx00 | B3 |
| SIZE | TYPE | DWG NO. | REVISION | | | | | | | | |
| B | C- | MA1LAXxx00 | B3 | | | | | | | | |
| | SCALE: NONE | C-MA1LAXxx00 | SHEET 1 OF 1 | | | | | | | | |

NOTES: UNLESS OTHERWISE SPECIFIED

- MATERIAL:
INSULATION INSERT: PA66,UL94 V0
SEAL: VITON
HOUSING BODY: ZINC DIE CAST, NICKEL PLATED

- SPECIFICATIONS:
 - CURRENT RATING: 10 AMPS - 12 POSITION
9 AMPS - 16 POSITION
9 AMPS - 17 POSITION
7 AMPS - 19 POSITION
 - VOLTAGE RATING: 160V AC/DC - 12 POSITION
125V AC/DC - 16 POSITION
125V AC/DC - 17 POSITION
63V AC/DC - 19 POSITION

- OPERATING TEMPERATURE: -20°C TO +130°C
- DIELECTRIC WITHSTANDING VOLTAGE: LESS THAN 2 MILLIAMPS CURRENT LEAKAGE @ 2500 VOLTS AC.
- DEGREE OF PROTECTION: IP67 (MATED CONDITION)
- DEGREE OF POLLUTION: 3 PER UL840
- OVERVOLTAGE CATEGORY: III PER UL840
- MATING CYCLE DURABILITY: >500 CYCLES
- RoHS COMPLIANT

3. ALL DIMENSIONS ARE FOR REFERENCE USE ONLY.

TITLE: M23 RECEPTACLE STRAIGHT THREADED
DWG NO: MA1LAXxx00
REV: B3
SH: 1
OF: 1