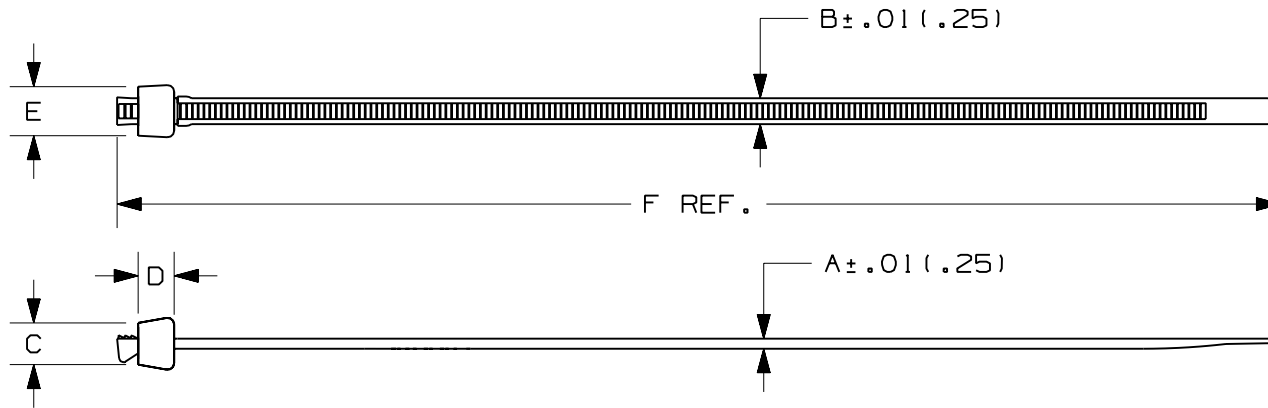


THIS COPY IS PROVIDED ON A RESTRICTED BASIS AND IS NOT TO BE USED IN ANY WAY DETRIMENTAL TO THE INTERESTS OF PANDUIT CORP.



PANDUIT PART NO.*	BUNDLE DIA.		A in (mm)	B in (mm)	C in (mm)	D in (mm)	E in (mm)	F in (mm)	MIN. LOOP TENSILE lbs. (N)	CROSS-SECTION	WEIGHT lbs./100pcs. (g)
	MIN. in (mm)	MAX. in (mm)									
SST2H	.06 (1.5)	2.00 (51)	.062 (1.6)	.300 (7.6)	.325 (8.3)	.250 (6.4)	.460 (11.7)	8.0 (203)	120 (534)	HEAVY	.62 (280)
SST4H	.06 (1.5)	4.00 (102)	.067 (1.7)	.300 (7.6)	.325 (8.3)	.250 (6.4)	.460 (11.7)	14.8 (376)	120 (534)	HEAVY	1.2 (537)
SST8H	.06 (1.5)	8.00 (203)	.067 (1.7)	.300 (7.6)	.325 (8.3)	.250 (6.4)	.460 (11.7)	27.5 (699)	120 (534)	HEAVY	2.1 (939)

NOTES:

- *1) SEE CURRENT PRICE SHEET FOR PART NUMBER SUFFIX DESIGNATION FOR PACKAGE SIZE AND PART COLOR.
- 2) RECOGNIZED UNDER THE COMPONENT PROGRAM OF UNDERWRITERS LABORATORIES INC.

DIMENSIONS IN PARENTHESES ARE IN METRIC UNITS.

PANDUIT CORP. TINLEY PARK, ILLINOIS

**STA-STRAP CABLE TIES
SS SERIES**

REV	DATE	BY	CHK	DESCRIPTION	ECN	R	CUST	SUP
--	----	--		CORRECTED MATERIAL NAME TO NYLON 6.6	----	--		
2	12-8-05	ERW		CORRECTED METRIC CONVERSION OF SST2H MAX. BUNDLE DIA. (51)	5550		2	
--	----	--		REMOVED SST2.5H - OBSOLETE PART	----	--		
1	11-27-01	JABO	SP	REVISED AND REDRAWN	5550		1	SP

UNLESS OTHERWISE SPECIFIED, DIMENSIONAL TOLERANCES ARE:
(.X) ± .0005 (.0127) (.XXX) ± .020 (0.51)
(.XX) ± .02 (0.5) ANGLES ± .0005

UNLESS OTHERWISE SPECIFIED, ALL DIMENSIONS ARE GIVEN IN INCHES, THIRD ANGLE PROJECTION.

DRAWN BY
JABO

MAT'L:

SCALE
NONE

DATE
11-27-01

NYLON 6.6

DRAWING NO.
SS-5550
SHEET 3 OF 3

DWG
A
SIZE

CHK'D
SP