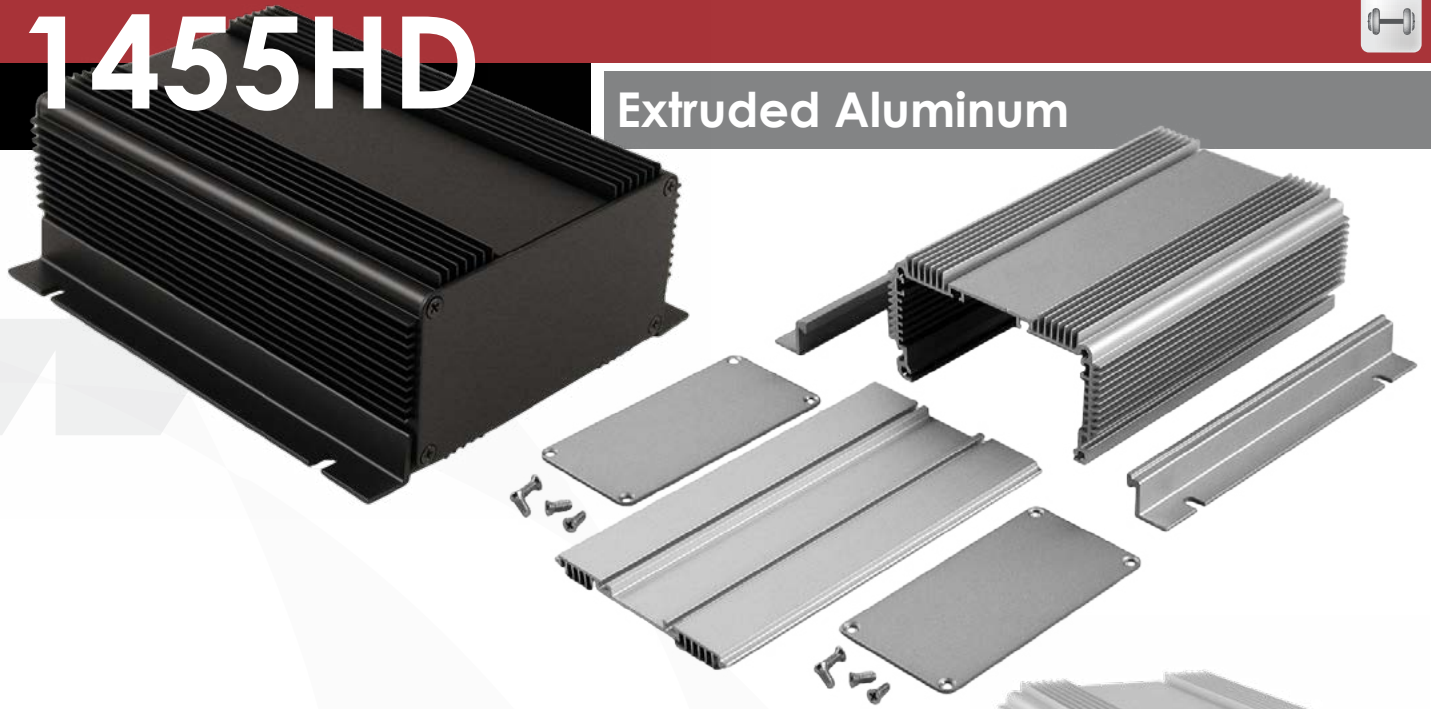


1455HD



Extruded Aluminum



Key Features:

- Designed to house P.C. boards or equipment.
- Easy wall mounting or shelf mounting with two removable flanges
- Sized for 100mm wide eurocard P.C. boards.
- P.C. boards mount horizontally by sliding into internal slots extruded into the enclosure body.
- Two piece body - with easily removable belly plate for easy access to top interior of enclosure.
- Extruded body & aluminum endplates with a choice of either clear or black anodized finish.
- Includes eight (8) assembly screws - either clear or black assembly screws to match enclosure panels & body. NOTE: Recommended screw torque is 5 lbf/in.
- For black replacement screws (quantity 100) order part number **1455MS100BK**
- For clear replacement screws (quantity 100) order part number **1455MS100**



Extras

Replacement Screws (100-pack)



1455MS100BK



1455MS100

Part Number	Anodize Color	Units	Length	Width	Height
1455KHD1201	Clear	In	4.72	3.39	2.01
1455KHD1201BK	Black	mm	120	86	51
1455KHD1601	Clear	In	160	3.39	2.01
1455NHD1601BK	Black	mm	6.3	86	51
1455NHD1201	Clear	In	120	4.37	2.39
1455NHD1201BK	Black	mm	4.72	110	60.8
1455NHD1601	Clear	In	6.3	4.37	2.39
1455NHD1601BK	Black	mm	160	110	60.8



www.hammondmfg.com

USA

(716) 630-7030

Canada

(519) 822-2960

Quebec

(450) 975-1884

Europe (UK)

01256 812812

Australia

+61-8-8240-2244