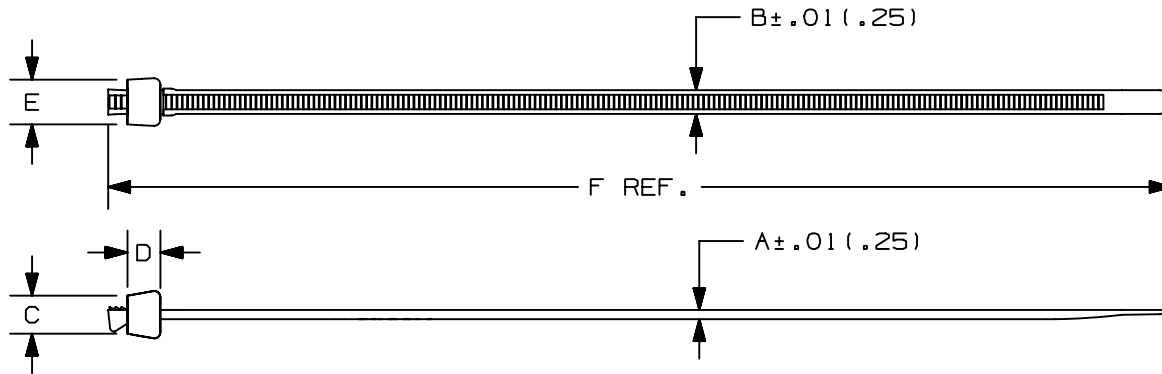


THIS COPY IS PROVIDED ON A RESTRICTED BASIS AND IS NOT TO BE USED IN ANY WAY DETRIMENTAL TO THE INTERESTS OF PANDUIT CORP.



PANDUIT PART NO.*	BUNDLE DIA.		A in (mm)	B in (mm)	C in (mm)	D in (mm)	E in (mm)	F in (mm)	MIN. LOOP TENSILE lbs. (N)	CROSS-SECTION	WEIGHT lbs./100pcs. (g)
	MIN. in (mm)	MAX. in (mm)									
SST1.5S	.06 (1.5)	1.25 (32)	.045 (1.2)	.180 (4.6)	.250 (6.4)	.165 (4.2)	.310 (7.9)	5.7 (146)	50 (222)	STANDARD	.18 (80)
SST2S	.06 (1.5)	1.75 (45)	.045 (1.2)	.180 (4.6)	.250 (6.4)	.165 (4.2)	.310 (7.9)	6.7 (172)	50 (222)	STANDARD	.22 (100)
SST3S	.06 (1.5)	3.00 (76)	.048 (1.2)	.180 (4.6)	.250 (6.4)	.165 (4.2)	.310 (7.9)	11.0 (279)	50 (222)	STANDARD	.44 (201)
SST4S	.06 (1.5)	4.00 (102)	.048 (1.2)	.180 (4.6)	.253 (6.4)	.200 (5.1)	.350 (8.9)	15.0 (381)	50 (222)	STANDARD	.59 (266)

**NOTES:**

- \*1) SEE CURRENT PRICE SHEET FOR PART NUMBER SUFFIX DESIGNATION FOR PACKAGE SIZE AND PART COLOR.
- 2) RECOGNIZED UNDER THE COMPONENT PROGRAM OF UNDERWRITERS LABORATORIES INC.

										DIMENSIONS IN PARENTHESES ARE IN METRIC UNITS.		
										PANDUIT		
										CORP. TINLEY PARK, ILLINOIS		
										STA-STRAP CABLE TIES SS SERIES		
										UNLESS OTHERWISE SPECIFIED, DIMENSIONAL TOLERANCES ARE: (.X) ± ---- (.XXX) ± .020(.51) (.XX) ± .02(.5) ANGLES ± ----		
										UNLESS OTHERWISE SPECIFIED, ALL DIMENSIONS ARE GIVEN IN INCHES, THIRD ANGLE PROJECTION.		
										DRAWN BY JABO		
										DATE 11-29-01		
										CHK'D		
										MAT'L; NYLON 6/6		
										SCALE NONE		
4	11-29-01	JABO		REVISED AND REDRAWN	5550	4					DRAWING NO. SS-5550	DWG A
REV	DATE	BY	CHK	DESCRIPTION	ECN	R	CUST	SUP			SHEET 2 OF 3	SIZE